



ERASMUS+  
Centralised Actions - Infoday  
Utrecht, 14 November 2017

# Erasmus Mundus Joint Master Degrees

Key features, Dutch participation and specifics  
of the call 2018

Bart Cosyns

EACEA, Unit A3

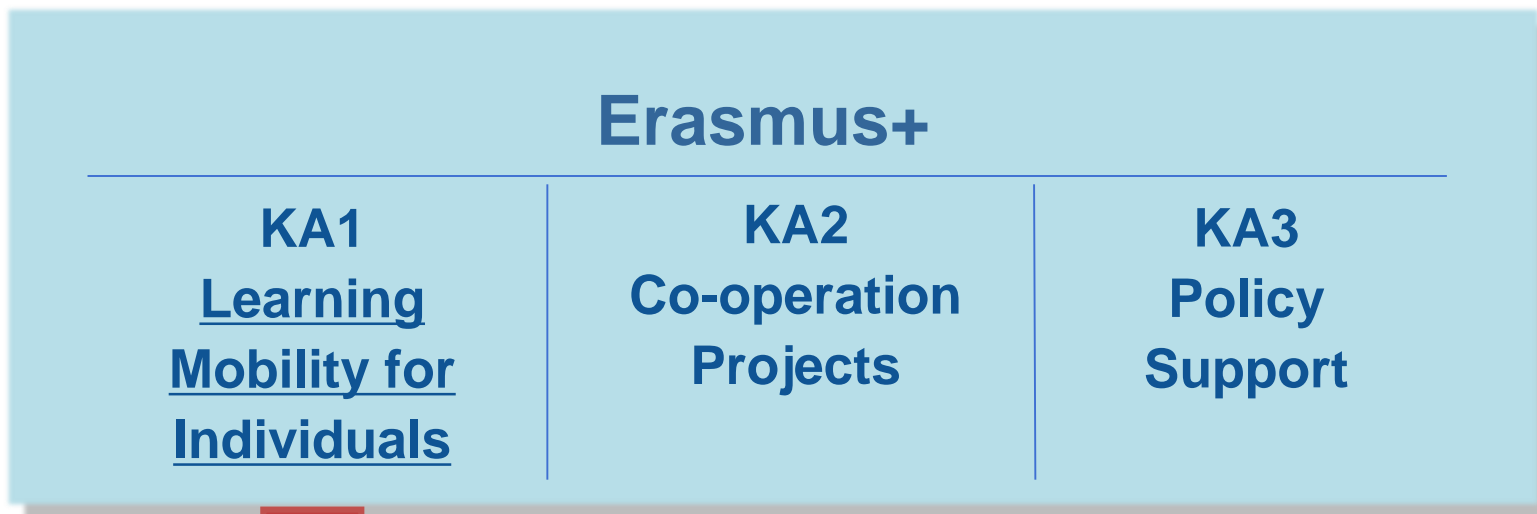


## Erasmus Mundus Joint Master Degrees

# Key features

# A streamlined architecture: 3 Key Actions

A single integrated programme



*Specific activities:*

- Jean Monnet
- Sport



# Erasmus Mundus Joint Master Degrees

## ...in brief:

- ✓ Highly integrated Master study programmes delivered by international HEI consortium
- ✓ Excellence, no restriction in disciplines
- ✓ **4** consecutive student intakes
- ✓ Award of a joint or multiple Master degree
- ✓ Full scholarships for students - 75% for students from Partner Countries

# International cooperation

## Programme Countries

***EU Member States***

**+**

***Other Programme Countries:***

Iceland, Liechtenstein, Norway,  
Former Yugoslav Republic of  
Macedonia, Turkey

**+**

## Partner Countries

**All other countries  
throughout the world**



# EMJMD - main aims





# Opportunities for HEI's from Programme countries

High degree  
of visibility in a  
programme of  
Excellence

Multiannual  
grant  
agreement  
and  
personalised  
management  
support by  
EACEA

Attractive EU  
co-funding  
scheme

Select top  
students  
worldwide



# Opportunities for HEI's from Partner countries

High degree of international visibility in EU programme of Excellence

Increased exchange of excellent students and staff from and to HEIs in Partner countries

Exchange of good practices with other participating HEIs

Possibility of further educational and research collaborations



# Opportunities for students



Top academic expertise & specialisation options

Unique mobility experience recognised joint/multiple degree

Full scholarships with attractive financial envelope

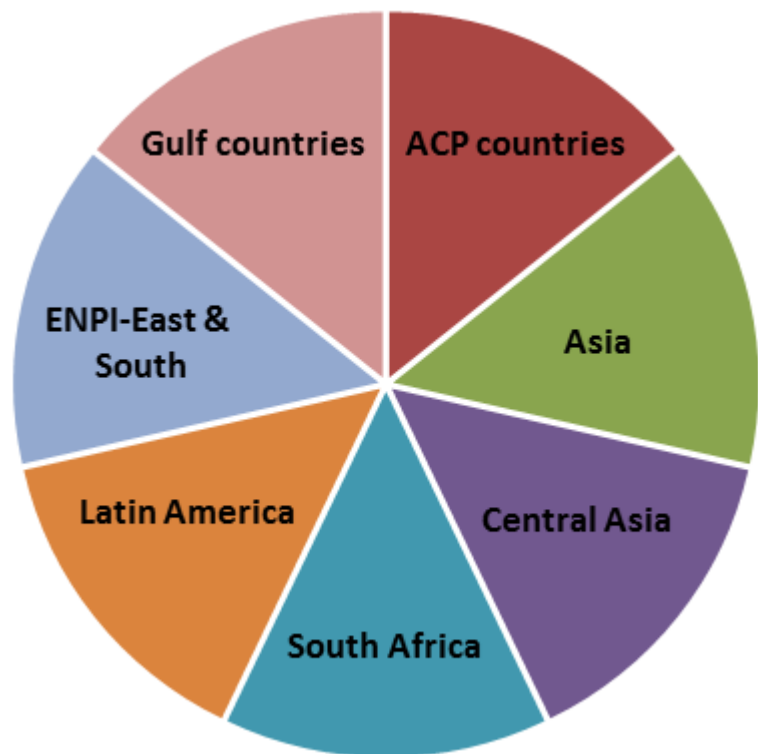
High employability thanks to key skills developed

Support by consortium partners and EMA

*EMA = Erasmus Mundus Students and Alumni Association*

# Additional scholarships for 8 targeted regions

Consortia may receive up to 12 additional student scholarships per intake, i.e.  $\approx$  48 scholarships per EMJMD edition



**ADDITIONAL AWARD CRITERION**

# EMJMD funding rules

EMJMD EU grant  
~ 3-4 million €

## HEIs

- 50.000 € per student intake
  - 20.000 € optional preparatory year
- = 220.000 € max.

## Students

- 25.000 € max. per scholarship per academic year
- participation, travel & installation costs, living allowance*

# EMJMD students scholarships grants

	Students from Partner Countries	Students from Programme Countries
Contribution to participation costs	up to <b>9.000 € per year</b>	up to <b>4.500 € per year</b>
Contribution to travel costs*	<b>2.000 € per year</b> if residence is less than <b>4.000 km</b> from EMJMD coordinator  <b>3.000 € per year</b> if residence is <b>4.000 km</b> or more from EMJMD coordinator	<b>1.000 € per year</b>
Contribution to installation costs*	<b>1.000 €</b>	-
Living allowance (max 24 months)	<b>1.000 € per month</b> (not when in country of residence, and max 3 months in any Partner Country)	<b>1.000 € per month</b> (not when in country of residence)



\* Scholarship amounts for travel/installation depend on the place of residence at the time of scholarship application



## Erasmus Mundus Joint Master Degrees

# Dutch participation in the programme

## Call 2017 EMJMD

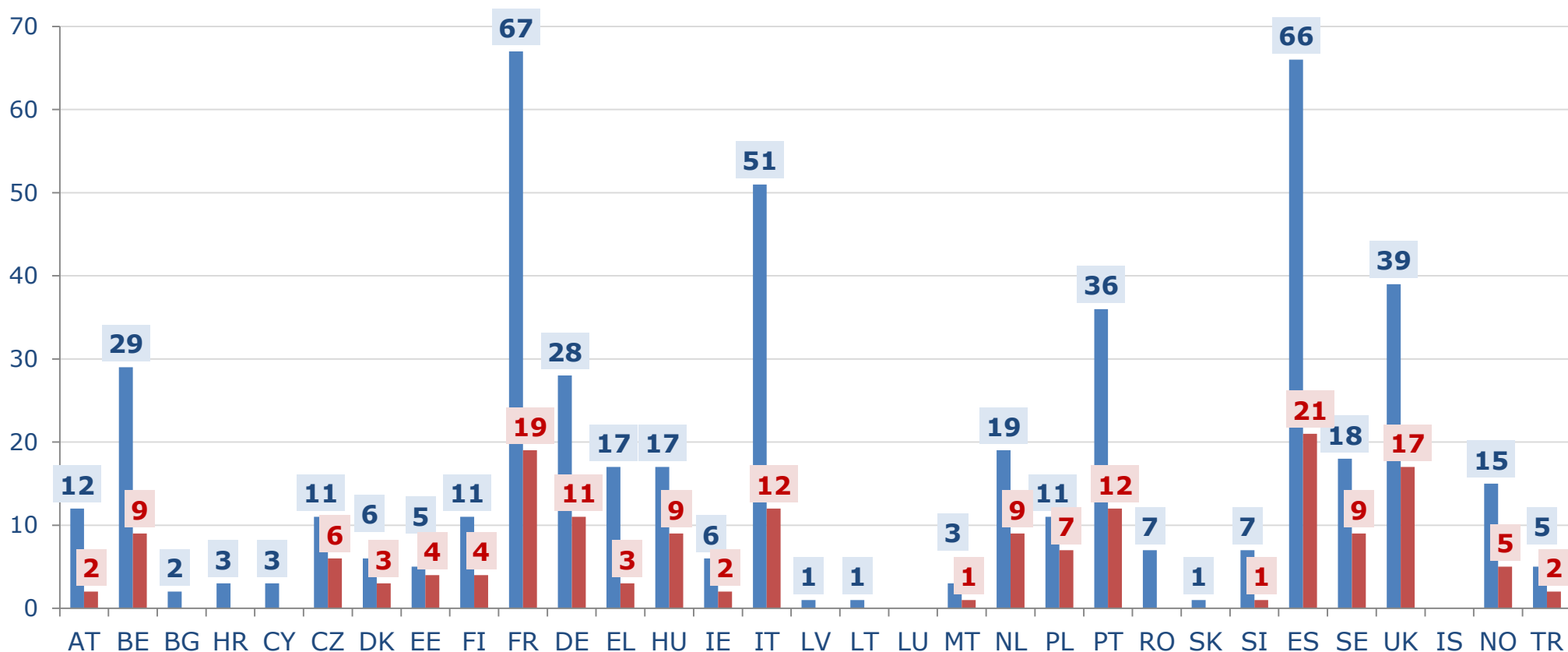
EMJMD submitted proposals	2017	2016	
	122	92	33%

2017_EMJMD selection figures		Success %	EU grant	Scholarships
Selected for funding	<b>38 projects</b>	<b>31%</b>	<b>€ 112.603.440</b>	<b>2.330</b>

# 2017 EMJMD – Programme Country participation

## Applicants + Partners

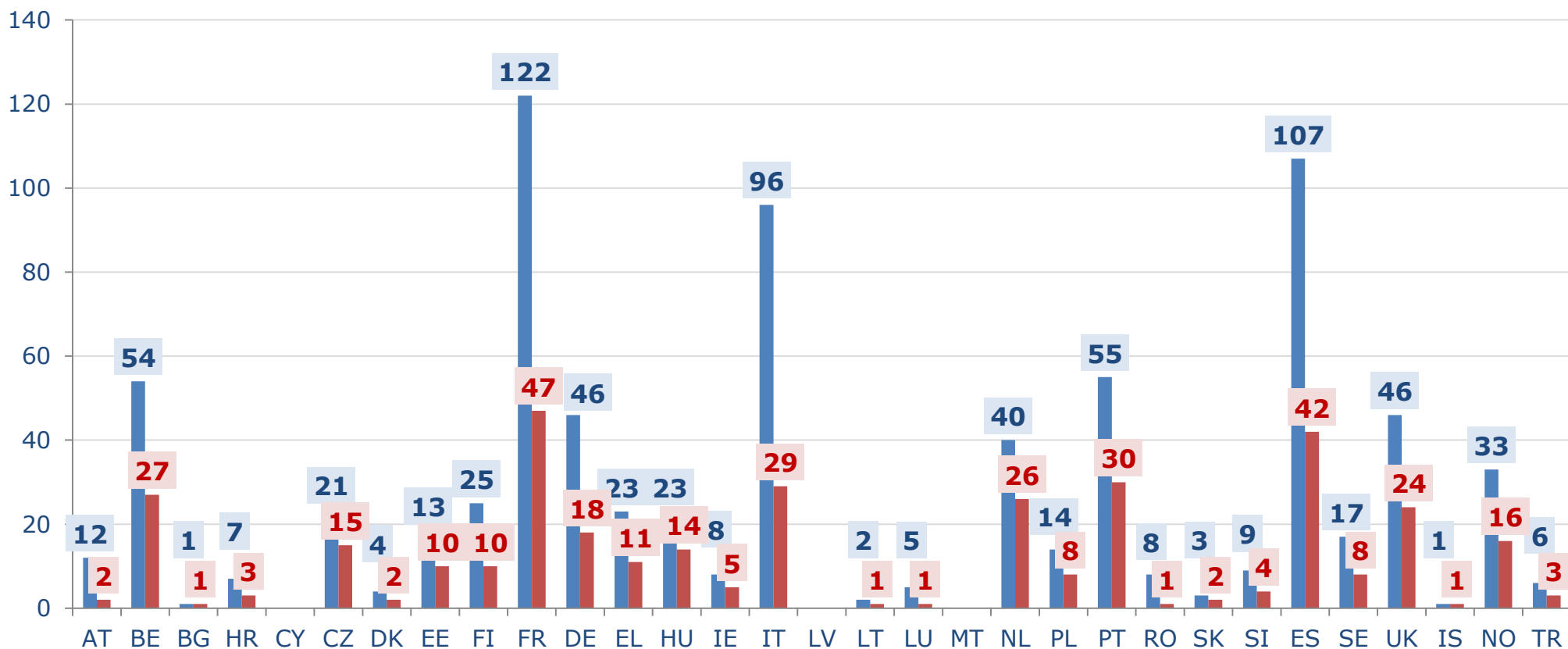
#498 ■ eligible ■ selected #169



# 2017 EMJMD – Programme Country participation (2)

## Associated partners

■ eligible ■ selected #360





## EMJMD – additional information

- ❖ 60 – 90 or **120** ECTS possible, but in practice:  
Resp. 0 – 3 – 89 selected EMJMDs
- ❖ Re-selected projects and resubmissions (!)
- ❖ Joint degrees

## NL in EMJMD

- ❖ 12 / 351 proposals had a Dutch applicant (3,4%)
- ❖ 6/12 successful:
  - ❖ **G-watCH** (Groundwater and Global Change), S.U.Delft
  - ❖ **IMIM** (Innovative Medicine), R.U.Groningen
  - ❖ **EMCL+** (Clinical Linguistics), R.U.Groningen
  - ❖ **EU-HEM** (Health Economics & Management), E.U.Rotterdam
  - ❖ **EURCULT** (Society, Politics & Culture in a global context), R.U.Groningen
  - ❖ **IMETE** (Environmental Technology & Engineering), S.U.Delft
- ❖ 19 / 91 selected projects have a Dutch involvement (20,8%)!



## Erasmus Mundus Joint Master Degrees

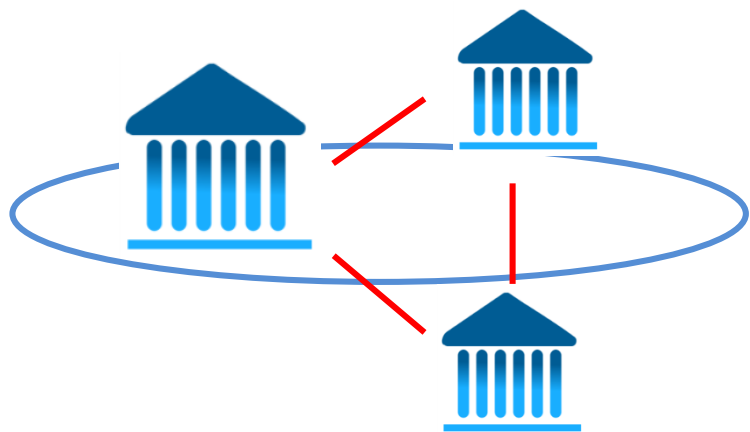
# Call for proposals 2018

## New elements in the 2018 EMJMD Call

- ❖ **4 student intakes** per EMJMD (max. duration **6 years**)
- ❖ **15 EMJMD scholarships per intake** (total number of 60 EMJMD scholarships per Grant Agreement)
- ❖ **Up to 12 additional scholarships** per intake for **targeted regions of the world**
- ❖ **Programme Country scholarships** offered to the consortia increase (75% of the Partner Country scholarships take into account Heading 1 and Heading 4/EDF budgets together)



## Taking part as an organisation



+ Public and private organisations  
in Programme & Partner countries

- ❖ Programme country HEIs:  
Accreditation 
- ❖ Non academic partners
- ❖ Associated partners

**Minimum consortium:**  
3 HEIs - 3 different  
Programme countries

## Common requirements for all Erasmus+ International dimension – Centralised Actions

- ✓ Submission on-line to EACEA
- ✓ eForm & Attachments
- ✓ Four types of assessment criteria
  - ❖ **Eligibility Criteria**
  - ❖ *Exclusion Criteria*
  - ❖ *Selection Criteria*
  - ❖ **Award Criteria**

## Eligibility criteria

➤ Erasmus+ [Programme Guide](#)

Part B: EMJMD section, pages **109-116**

Annex I: ERASMUS MUNDUS JOINT MASTER DEGREES, pages **284-286**

➤ The eForm has been designed in a way that submission will be possible only if certain basic eligibility criteria are fulfilled:

*e.g. submission deadline, minimum consortium composition (n°, profile and role), attachments uploaded in the eForm, maximum duration of the EMJMD, maximum amount of the grant requested, ...*

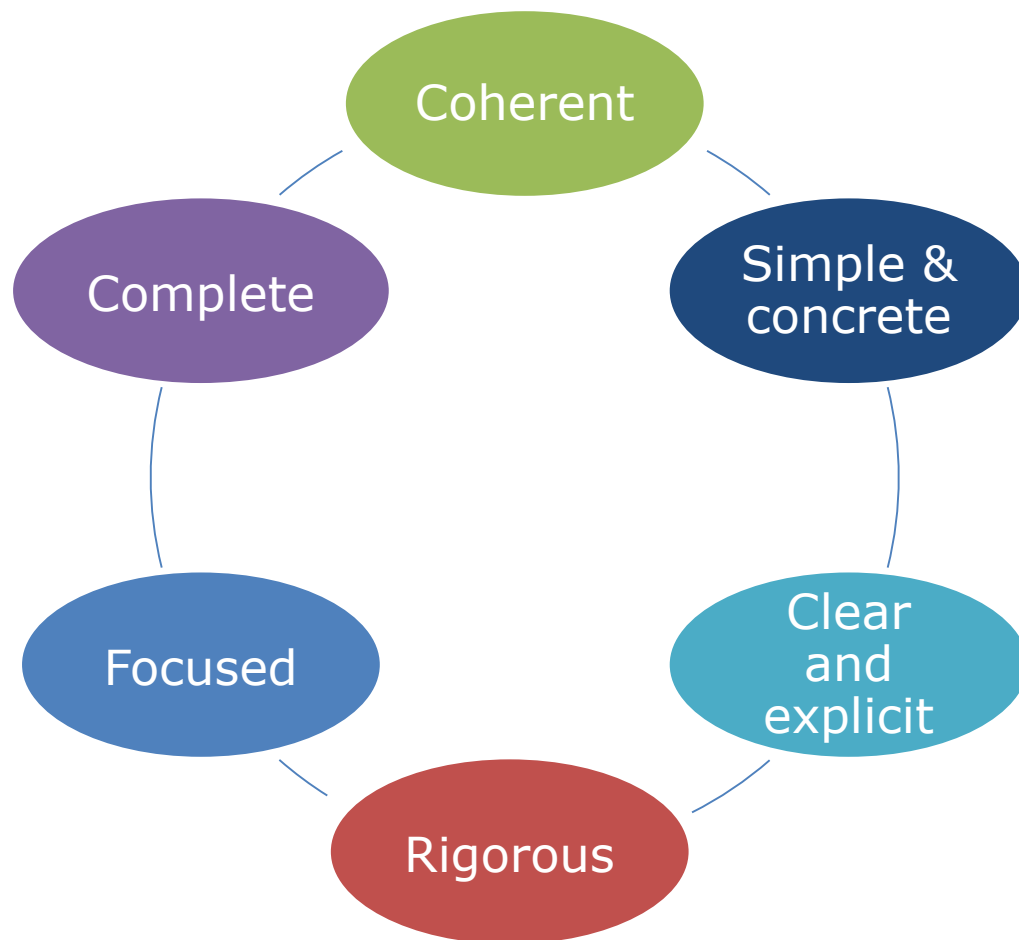
➤ Other eligibility criteria will be checked by the Agency staff:

*e.g. accreditation, submission language, duly filled in attachments, valid ECHE, ...*



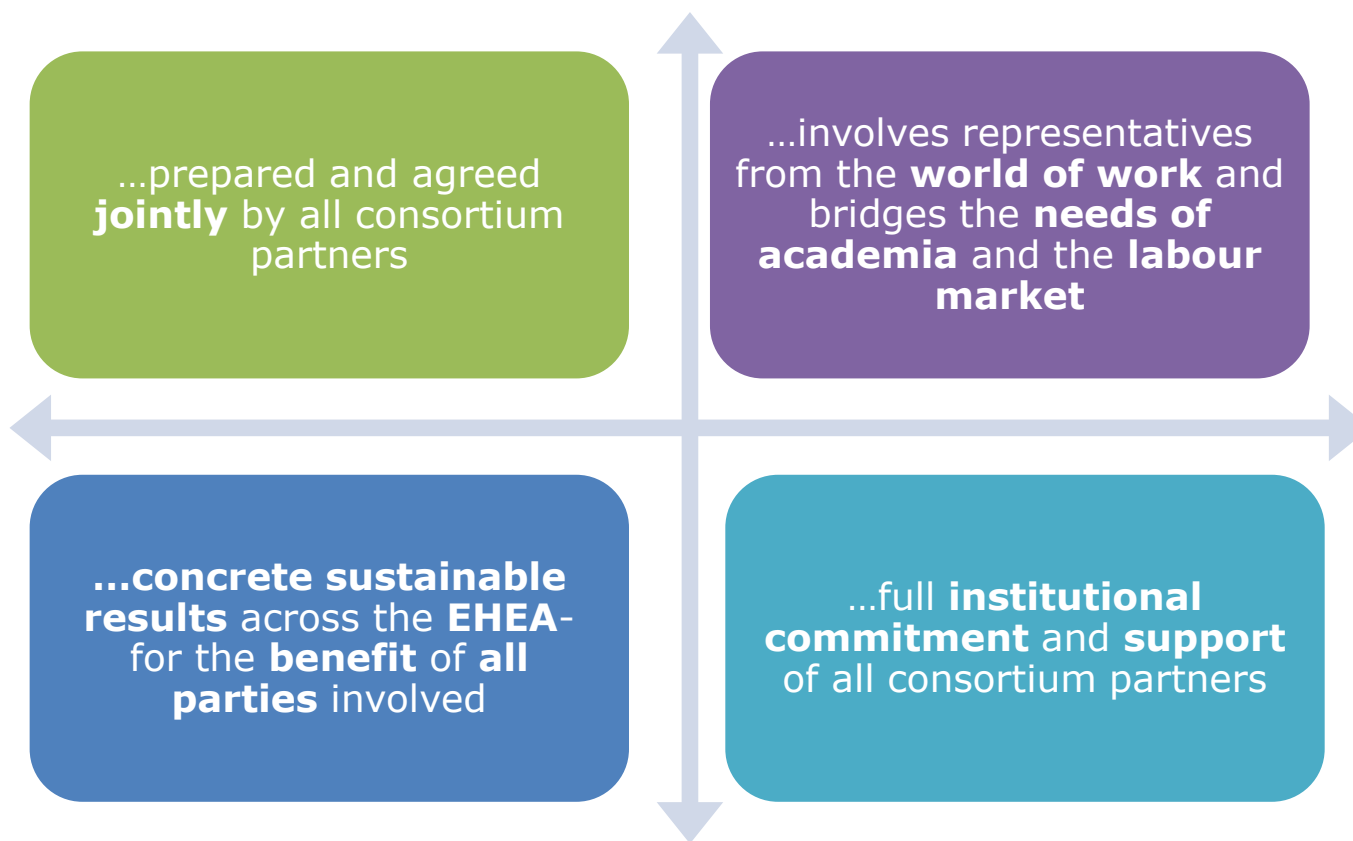
It does not matter how well the project has been designed.  
If it does not fulfil the eligibility criteria, this will lead to the **automatic rejection** of the proposal

## Advice for a competitive proposal





## Advice for a competitive proposal



## **Award criteria**

**Relevance of the project (40)**

**Quality of the project design and implementation (20)**

**Quality of the project team & the cooperation arrangements  
(20)**

**Impact and dissemination (20)**

## Award criteria - General advice

### DO's

- ✓ Respond to the **sub-points** of the Award Criteria paying attention to the **specific context**
- ✓ Make sure you get all your points across in a **structured and coherent** manner, but keep it **short and simple**
- ✓ Present all **important and distinguishing features** of your project – the experts' assessment will be based **only** on information provided in the application
- ✓ Provide **supporting evidence** for your statements

## Award criteria - General advice

### DON'Ts

- ✘ *Avoid being **vague** in demonstrating the project's reasoning and strengths*
- ✘ *Do not assume that because of your expertise and **previous experience**, you do not need to explain how your project is built-up and will develop in the future*
- ✘ *Make sure you are not presenting your proposal as the sum of each partner's contribution, but rather demonstrate the **joint undertaking** of the consortium*

## Award criterion 1

### Relevance of the project (40 points)

#### DO's

- **Convincing evidence for "jointness" and course integration**
- **Thoroughly assessed results of needs analysis at different levels**
- **Innovation & excellence for HEIs, quality & attractiveness widespread across the EHEA**
- **Concrete benefits for each targeted group (students, academic staff, etc.)**



#### DON'Ts

- **Dominance of coordinating institution instead of a common and integrated approach**
- **Imprecise targets for the degree award and lack of joint strategy**
- **Inaccurate needs analysis methodology resulting in irrelevant conclusions**
- **Weak integration of internationalisation strategies at the cost of stakeholders**

## Award criterion 2: Quality of project design and implementation (20 points)

### DO's

- **Effective strategy and tools** for monitoring and ensuring excellence
- **Academically relevant design and rationale** of mobility paths with **concrete learning outcomes**
- **Proactive consortium support** responding to students and staff needs
- **Interaction** with world of work **integrated** in the course



### DON'Ts

- **Absence of an established mechanism** to appropriately react to evaluation findings
- **Unfeasible, unbalanced and ineffective** mobility schemes
- **Underestimation** of the administrative **workload** to the detriment of the course
- **Negligence of student integration** in socio-cultural and professional context

## Award criterion 3: Quality of project team and cooperation arrangements (20 points)

### DO's

- **Synergies** resulting from the **complementarity** of partners
- Existing partnerships enriched with **new partners** from **EHEA**
- **Inclusive and transparent** cooperation mechanisms, based as well on **mutual trust**
- **Academic jointness** as **central theme** during course implementation
- **Realistic and transparent** financial plan



### DON'Ts

- **Unclear motivation** of partners to join the project
- **Failure** to ensure **institutional backing** of the partners
- **Lack of attention** to the variety of national **legal frameworks**
- Avoid too **rigid cooperation arrangements** not allowing for necessary adaptations
- **Imprecise** financial management provisions of the consortium

## Award criterion 4

### Impact and dissemination (20 points)

#### DO's

- **Concrete indicators and tools** for measuring impact on **EHEA HEIs** and other stakeholders
- **Tailored** promotion /dissemination approach to different audiences
- **Integration of labour-market elements** to promote employability and support sustainability
- Provisions for **wide access** to course materials



#### DON'Ts

- **Lack of definition and promotion** of the programme's **distinctive selling points** demonstrating its competitiveness
- **No networking activities** to ensure wide programme **visibility** and **recognition** by academia, students and future employers
- **Sustainability strategy** not adequately considered and not integrated in **all project stages**





European  
Commission

Only if additional scholarships requested



## Award criterion 5: Additional scholarships for targeted regions

### DO's

- **Mutual benefits** through the cooperation with the specific regions/countries
- **Concrete contribution** to meet the **challenges** in the **HE systems** of these countries
- Support for a strong and educated **human capital**
- Effects of the cooperation on **economic and social development**



### DON'Ts

- **Imprecise plan and objectives** for building up cooperation with the regions/countries
- **Limitation** of collaboration to the level of student exchange
- **Unclear methodology** and **inappropriate approach** to reach excellent students

## How to apply (1)

- **How?**

- ✓ Applications to be **submitted to EACEA** using an **eForm with attachments**
- ✓ **One-phase submission**

- **When?**

- ✓ **Deadline: 15 February 2018 – 12:00 CET (Brussels time)**



Applicants are strongly advised to submit their application well in advance of the deadline, thus avoiding last-minute submission.

## How to apply (2) – eForm and attachments

### ■ *What?*

**eForm:** Parts A, B, C, D - Consortium composition and basic project data  
**+ compulsory attachments:**

- ✓ Proof of valid accreditation(s) (Word or .pdf format)
- ✓ Description of the project (Word or .pdf format)
  - Award criteria 1-4
  - + if applicable: "*Relevance of the project in the targeted region(s)*"
- ✓ Grant request table (Excel format)
- ✓ Declaration on honour and Partners' Mandates (.pdf format)
- ❖ Optional: Other relevant annexes (Word or .pdf format)



## Information sources

- ✓ Information on Erasmus+ and EMJMD (Programme Guide, call for proposals 2018, application procedure, etc.)
  - [https://eacea.ec.europa.eu/erasmus-plus/funding/key-action-1-erasmus-mundus-joint-master-degrees-2018\\_en](https://eacea.ec.europa.eu/erasmus-plus/funding/key-action-1-erasmus-mundus-joint-master-degrees-2018_en)
  - [http://ec.europa.eu/programmes/erasmus-plus/index\\_en.htm](http://ec.europa.eu/programmes/erasmus-plus/index_en.htm)
  - [http://eacea.ec.europa.eu/erasmus-plus\\_en](http://eacea.ec.europa.eu/erasmus-plus_en)
- ✓ EMJMD consortia selected in 2017
  - [https://eacea.ec.europa.eu/sites/eacea-site/files/2017\\_emjmd38-selection\\_results.pdf](https://eacea.ec.europa.eu/sites/eacea-site/files/2017_emjmd38-selection_results.pdf)
- ✓ Catalogue with ongoing EMJMDs offering scholarships
  - [https://eacea.ec.europa.eu/erasmus-plus/actions/key-action-1-learning-mobility-individuals/joint-master-degrees/scholarships\\_en](https://eacea.ec.europa.eu/erasmus-plus/actions/key-action-1-learning-mobility-individuals/joint-master-degrees/scholarships_en)
- ✓ Erasmus+ e-tutorials on the international dimension in Higher Education & How to prepare a competitive proposal, Bologna & Yerevan Declaration, EHEA
  - [https://eacea.ec.europa.eu/erasmus-plus/introduction-international-dimension-erasmus-plus\\_en](https://eacea.ec.europa.eu/erasmus-plus/introduction-international-dimension-erasmus-plus_en)
  - <http://bologna-yerevan2015.ehea.info/>
  - [http://www.ehea.info/Uploads/SubmittedFiles/5\\_2015/112705.pdf](http://www.ehea.info/Uploads/SubmittedFiles/5_2015/112705.pdf)

**We wish you a lot of success for  
your application!**

**For further questions, please contact us at:**

[EACEA-EPLUS-EMJMD@ec.europa.eu](mailto:EACEA-EPLUS-EMJMD@ec.europa.eu): questions on the application process and content of eForm & annexes

[eacea-helpdesk@ec.europa.eu](mailto:eacea-helpdesk@ec.europa.eu): technical problems in relation to the eForm [helpdesk phone: +32 (0)2 2990705]

